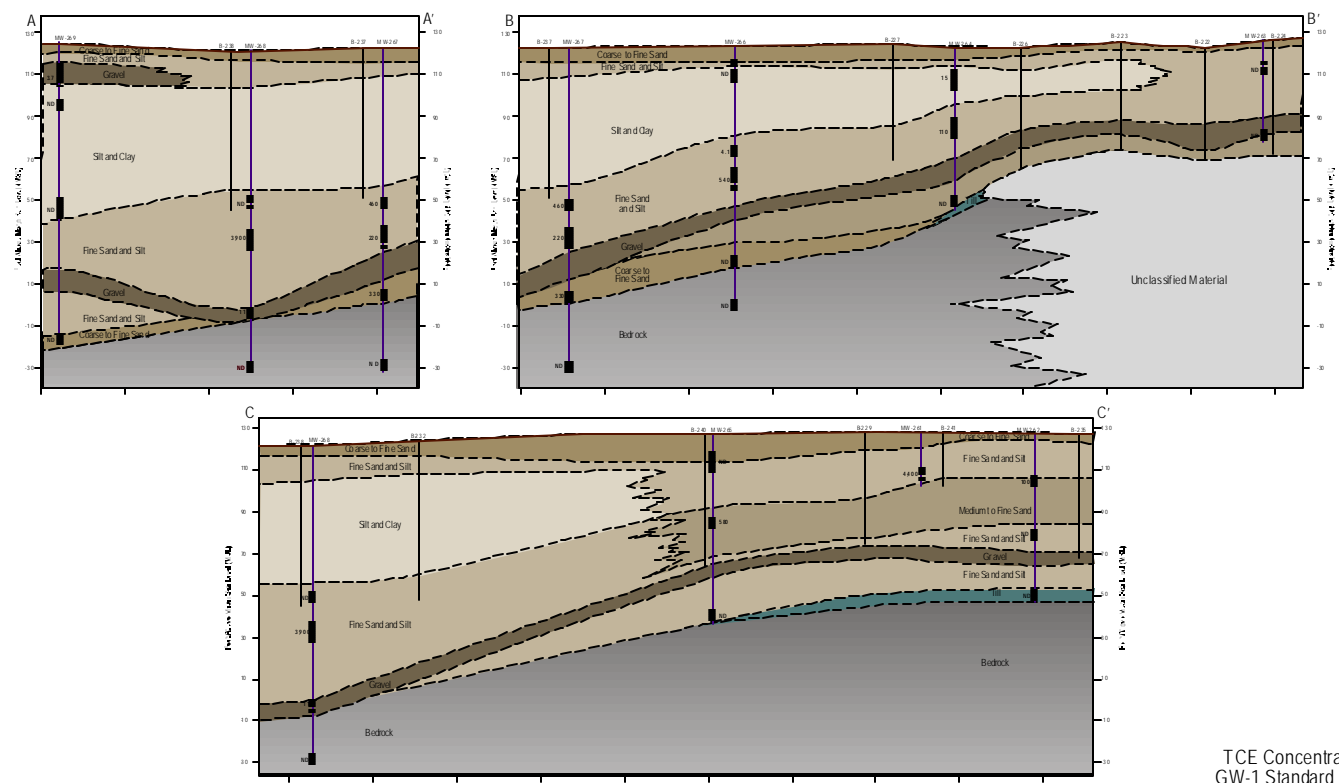
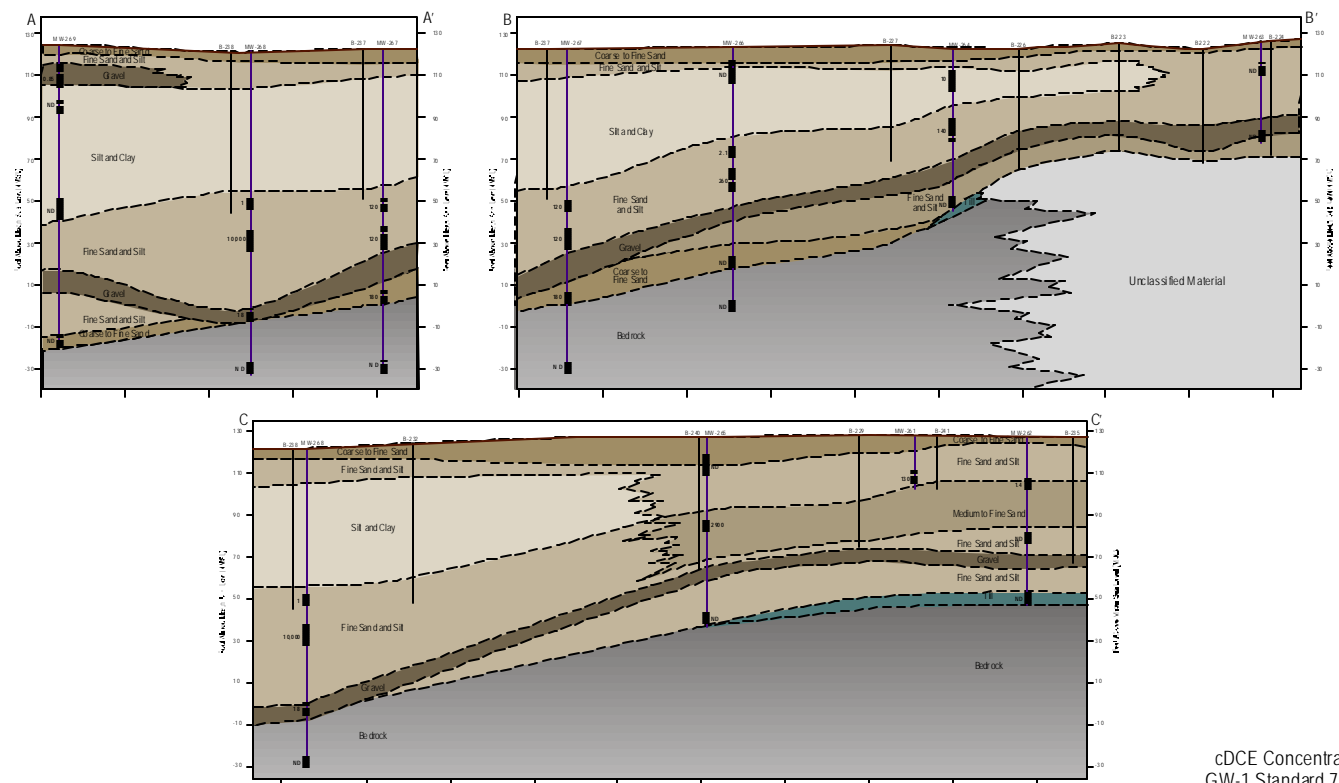


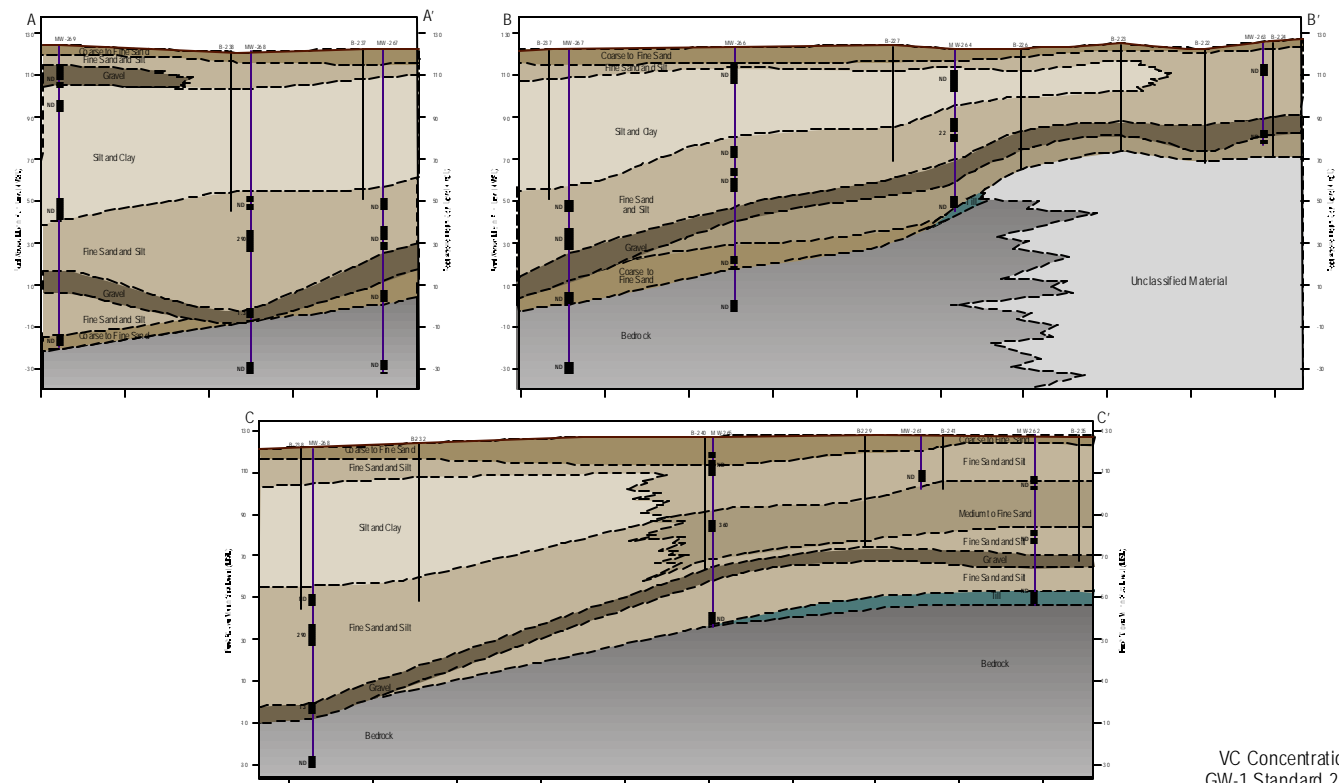
PCE Concentrations  
GW-1 Standard 5 ug/L



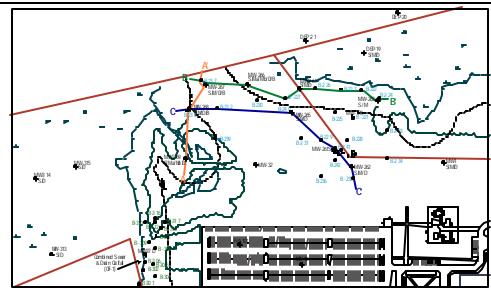
TCE Concentrations  
GW-1 Standard 5 ug/L



cDCE Concentrations  
GW-1 Standard 70 ug/L



VC Concentrations  
GW-1 Standard 2 ug/L



**Legend**

Monitoring Well: Well ID, Compound Concentration (ug/L), Screened Interval/ Sample Point

Soil Boring: Boring ID

10 Foot Well Screen

5 Foot Well Screen

Note: Concentrations presented are from the January 2003 groundwater sampling event.

Scale:  
Horizontal Scale 1"=80'  
Vertical Scale 1"=40'

ENVIRONMENTAL RESOURCES MANAGEMENT			
399 Boylston Street, Boston, Massachusetts 02116 (617) 267-8377			
CLIENT NAME	Raytheon	DRAWN BY	JE
FILE NAME	Cross Section D with VOC Concentrations (h11)	SCALE	Shown
Former Raytheon Facility		DATE	4/17/03
430 Boston Post Road		PROJ.	1922.03
Wayland, Massachusetts			
Generalized Geologic Cross-Sections Showing CVOC Concentrations			FIGURE NO. 8
PRINCIPAL-IN-CHARGE	JD	PROJECT MANAGER	RJF